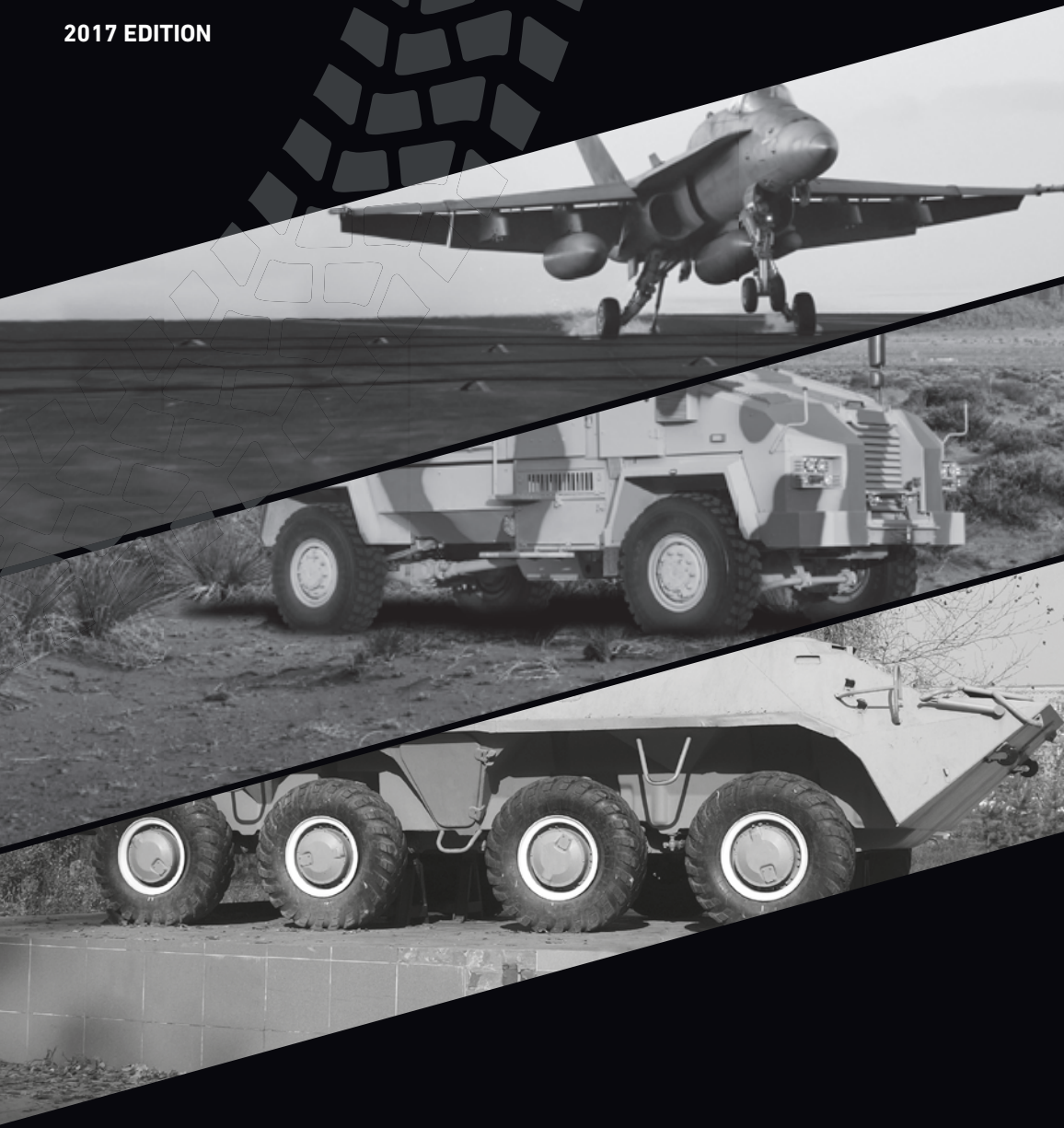


2017 EDITION

petlas

**MILITARY & LTB - TBB
TIRES**



petlas

Headquarters - Factory

Petlas Tire Industry and Trade
Kırşehir - Kayseri Devlet Yolu Üzeri
Gölkhisar Mevkii 7. km Kırşehir / TURKEY
T. +90 386 252 65 50 F.+90 386 252 65 70

Int. Sales & Marketing

Petlas Tire Industry and Trade
Kazım Karabekir Cd. Özcan Plaza
No.124 06060 Ankara / TURKEY
T. +90 312 309 30 30 F.+90 312 310 95 09

Petlas Tire USA

1111 E. Lincolnway STE 205
Cheyenne, WY 82001 USA

www.petlas.com

MADE IN TURKEY

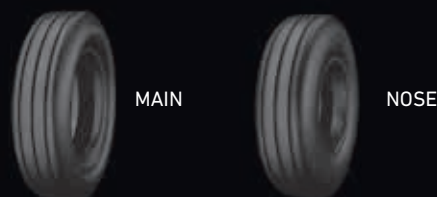
petlas
TRACK OF TRUST

RANGE OF PETLAS MILITARY & LIGHT TRUCK - TRUCK BUS BIAS TIRES

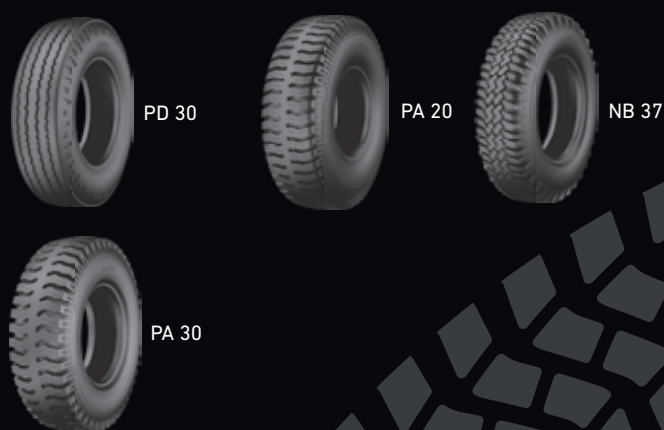
MILITARY LAND VEHICLES



MILITARY AIRCRAFT



LIGHT TRUCK BIAS



TRUCK BUS BIAS



DESCRIPTION

* For load capacity on various speeds, and inflation figures, please consult your sales representative.

** Load capacity on standard speed and weight.

Our company is entitled to make any change on any information in this catalogue, without further notice.

This catalogue annuls all the previous catalogues.

All figures are for reference; our company is not responsible for printing errors.

petlas
TRACK OF TRUST



petlas
TRACK OF TRUST

PM 40

The tread pattern of this tire provides excellent traction in both forward and reverse direction. Its powerful nylon body protects the tire and provides long life. This is an ideal tire for on / off road application under all weather conditions.



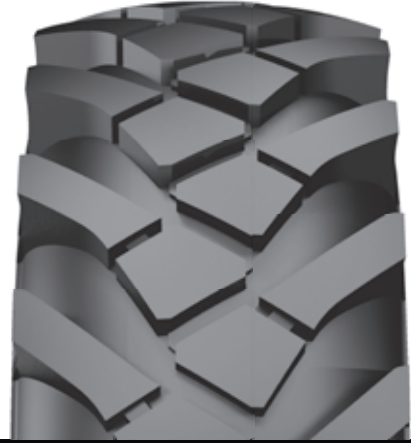
■ ALL SIZES

- 14.00-20 TT 18PR 160/157F
- 14.00-20 TT 20PR 161/158F



PM 50

Its powerful and densely arranged tread pattern prevents damages under difficult terrain conditions. Provides exceptional grip under all kinds of road conditions that require perfect traction.



■ ALL SIZES

- 12.5-20 TT 12PR 132F
- 12.5-20 TL 12PR 132F



PN 30

The tread pattern is durable against wear and damage. Its powerful nylon body protects the tire and provides long life. These are the tires that have been developed for special military land vehicles and for all kinds of pavement conditions.



■ ALL SIZES

13.00 - 18 TT/TL 8PR 131F
13.00 - 18 TT 10PR 135G



PT451 EXPLERO Radial

Ultimate traction on difficult conditions. Special compound and structure on bead part, reinforced piles on the tread part provide perfect durability with solid (internal apparatus) section. Optimal space between blocks provides discharge of mud and snow effectively.



■ ALL SIZES

37X12.50 R 16.5LT TL 127N
37X12.50 R 16.5LT TL 133N



PT461 EXPLERO Radial

Thanks to reinforced and separated shoulder block structure PT 461 offers perfect traction on soft soil, mud and snowy surfaces. With special design bead structure durable against cuts and wears with offering balanced driving.



■ SIZE

7.50 R16C TL 116/114N



RM 900 Radial

Deep channels between the blocks effectively evacuate mud and snow and provide perfect traction. The bonds between the blocks give resistance to tears and wears and the compound enable long service life. Special block type tread structure design to military purposes provides ultimate grip in off-road conditions even on muddy, sandy, rocky and icy roads.



■ SIZE

14.00 R20 TL 164/160G



RM 910 Radial

It is a special Off-Road tire developed for military vehicles and specific usage purposes. RM 910 is also available to use in all kind of terrains and compatible for all axes. Thanks to its wide channel block structure provides ultimate grip and traction on all kind of surfaces, also effective mud discharge. Offer longevity through special tread compound.



■ ALL SIZES

395/85 R20	TL	168G
335/80 R20	TL	149K
365/80 R20	TL	149K



Military Purpose Tires



MAIN

Tires used under the main body of military aircrafts.
T 37, T 38, F 104, F5 and F4 MAIN BODY TIRES FOR MILITARY AIRCRAFTS



■ ALL SIZES

20X4.4-12	TL	12PR	T37 MAIN
20X4.4-12	TL	14PR	T38 MAIN
22X8.5-11	TL	16PR	F5 MAIN
26X8.0-14	TL	16PR	F104 MAIN
27.75X8.75-14.5	TL	24PR	F16 BLOCK 40/50 MAIN
30X11.5-14-5	TL	24PR	F4 MAIN
30X11.5-14-5	TL	26PR	F4 MAIN
11.00-12	TL	10PR	III CN-235 MAIN



NOSE

Tires used under the nose of military aircrafts.
T 37, F 4, F 104, F5 and C 130 NOSE TIRES FOR MILITARY AIRCRAFTS



■ ALL SIZES

12.5-16	TL	12PR	C130 NOSE
16X4.4	TT	6PR	T37 NOSE
18X5.5	TL	14PR	F4 NOSE
18X5.7-8	TL	18PR	F16 NOSE
18X6.5-8	TL	12PR	F5 NOSE
8.50-10	TL	12PR	III CN-235 NOSE



PD 30

PD 30 is a bias tire suitable to use in standard conditions. High resistance against cuts and tread wears with special deep geometry design.



■ ALL SIZES

7.50-15C	TT	10PR	114/112L
6.50-16C	TT	10PR	108/107L
6.50-16C	TL	10PR	108/107L
7.00-16C	TT	10PR	113/112L
7.50-16C	TT	12PR	121/120J
7.50-16C	TT	14PR	122/121J



PA 20

Traction type tire with heavy load capacity for short distance roads. High resistance against cuts and wears with special deep geometry design. Durable nylon carcass structure.



■ ALL SIZES

6.50-16C	TT	10PR	108/107L
7.50-15C	TT	10PR	114/112L



NB 37

Traction type tire with heavy load capacity for short distance roads. Durable nylon carcass structure provides longevity. High resistance against cuts and wears.



■ ALL SIZES

6.50-16C	TT	10PR	108/107L
7.50-16C	TT	12PR	121/120J



PA 30

Traction type tire with heavy load capacity for short distance roads. High resistance against cuts and wears with special deep geometry design. Durable nylon carcass structure.



■ ALL SIZES

7.50-16C	TT	12PR	121/120J
7.50-16C	TT	14PR	122/121J



PD 40

PD 40 is a steer axle bias tire suitable to use in standart conditions. It provides balanced driving thanks to its specially tread design for steer axles. Offers longevity, ultimate grip and traction through wide base modern tread design and nylon cord structure.



■ ALL SIZES

9.00-20	TT	14PR	140/137 J
10.00-20	TT	16PR	146/143 J
11.00-20	TT	16PR	149/145 J
12.00-20	TT	18PR	154/149 J
12.00-24	TT	18PR	156/153 J



PA 40

PA 40 is a steer axle bias tire suitable to use in standart conditions. Also highly resistant to cut and wears. Offers longevity thanks to its strong carcass structure, tread geometry, specially developed tread composition. PA40 provides ultimate load capacity and self-cleaning.



■ ALL SIZES

9.00-20	TT	14PR	140/137 J
10.00-20	TT	16PR	146/143 J
11.00-20	TT	16PR	149/145 J
12.00-20	TT	18PR	154/149 J
12.00-24	TT	18PR	156/153 J



Petlas Military & LTB - TBB tires are characterized by quality workmanship, leading edge technology, unique tread designs and excellent performance offering perfect mix of quality and value.

Our success depends on exceeding the expectations of our customers and standing behind everything we do.

Our aim is to build long term relationships with our customers by providing excellent service, quality and delivering our promises.



petlas
TRACK OF TRUST